

7. Classroom examples

Record science experiments and instructional videos with annotation!

fold wing down

Start Recording

Paragraph

1

2

Select "Double"

Use stamps for math class!

Annotate on software and the Internet!



New Tablet Tutorial now on Facebook!

Check out **ELMO USA** on Facebook to see the video tutorial of the Tablet and Image Mate Accent.

ELMO Easy Instructional Guide

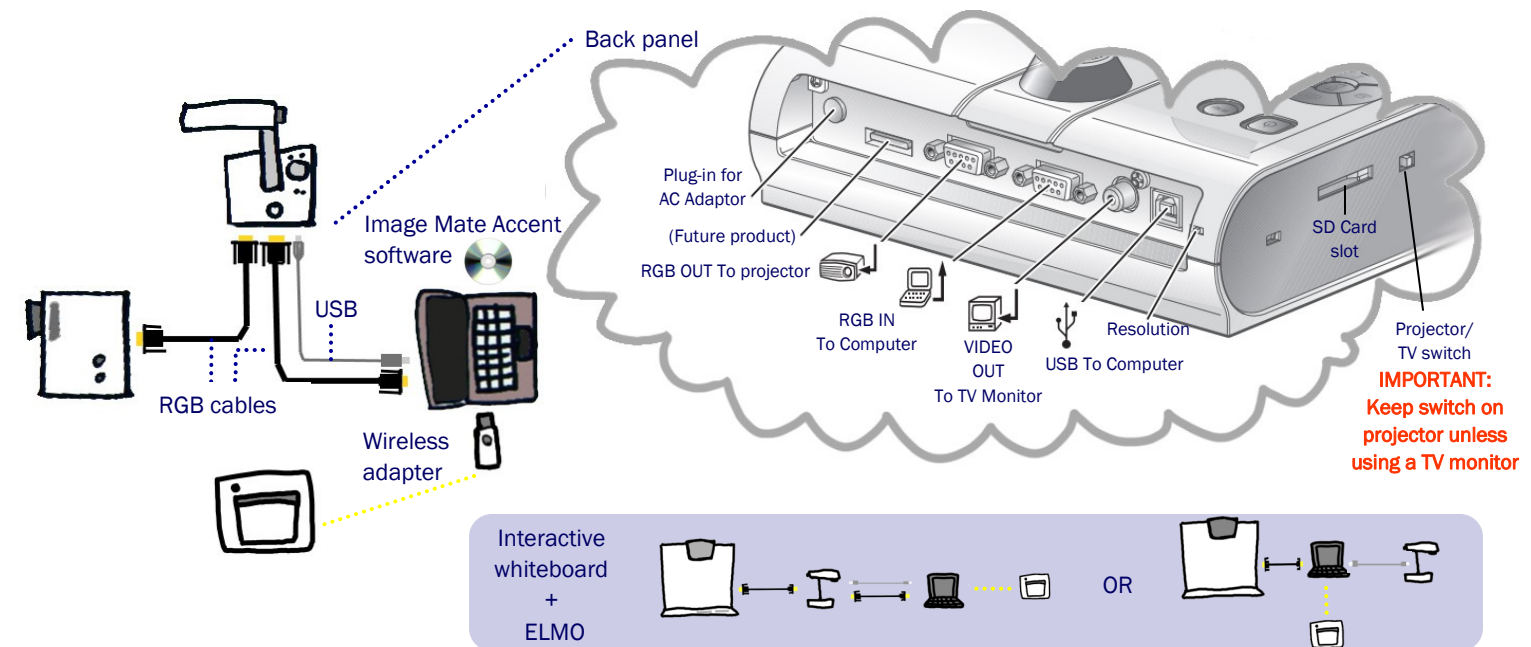
CRA-1 + TT-02RX

Contents

1. Setting Up
2. Zooming
3. Rotating
4. Basic Operation of TT-02RX
5. Menu
6. Tablet Function Keys/Image Mate Software
7. Classroom Examples

1. Setting up

- 1 Charge CRA-1 battery
- 2 Install Image Mate Accent Software
- 3 Connect TT-02RX, Computer, Projector, Wireless adaptor



IMPORTANT:
Keep switch on projector unless using a TV monitor

2. Zooming

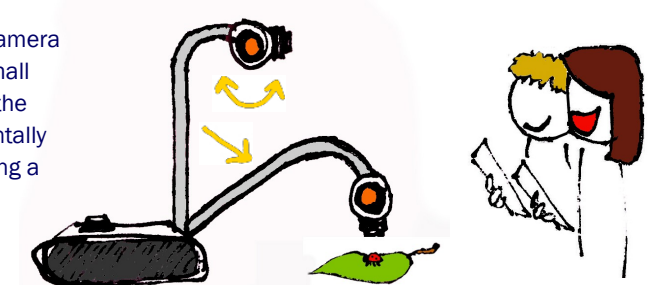
Twist the zoom knob to zoom in/out



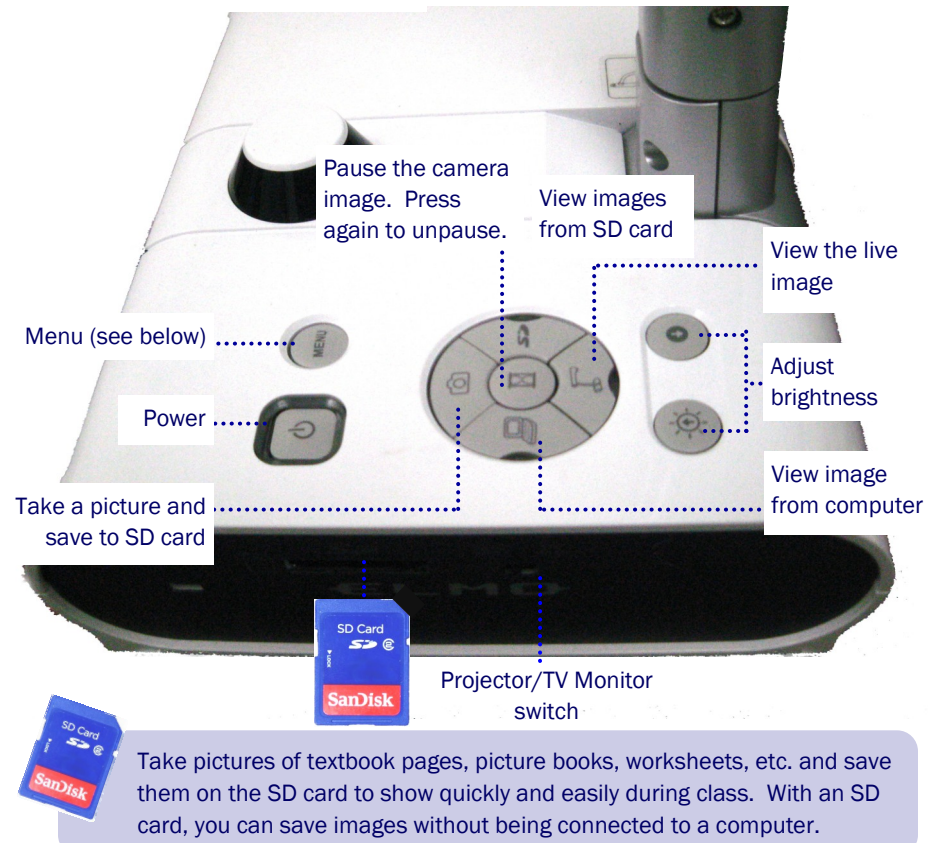
Press the Auto-focus button to focus after

3. Rotating

You can rotate the camera column close to a small object or try turning the camera head horizontally to view students giving a presentation, speech, etc.



4. Basic Operation



5. Menu

The Menu allows you to customize settings according to your preferences and lesson plan. Below are a few examples.

Image Settings

Microscope



Connect your microscope and set to Microscope mode to view slides. Zoom, capture images and record video.

AF Mode



Set Auto-focus mode to "Zoom-sync" and the ELMO will automatically adjust after zooming in and out.

Posi/Nega



Change the image from positive to negative mode.

Color/B&W



Change the image from color to black & white.

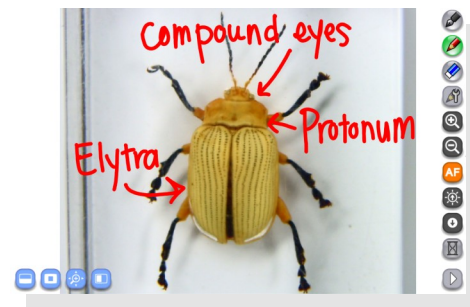
SD card Settings

Slide Show Settings



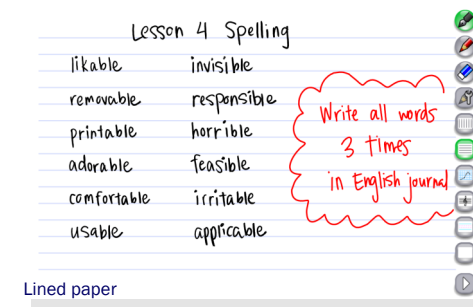
Press [SD card] then [Menu] Start a slideshow of the images from your SD card. Choose the interval time, order, and which images to play, etc.

6. CRA-1 (Wireless Tablet) Function Keys & Image Mate Accent



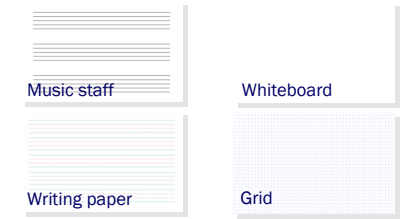
Document Camera Mode

Use the live image from the ELMO document camera with Image Mate Accent. Zoom, focus or pause the image. You can annotate on the image with the pens.

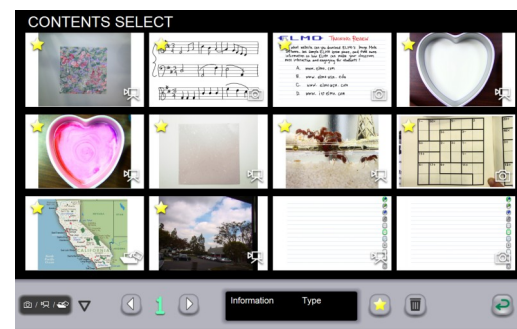


Whiteboard Mode

Choose from various backgrounds to use Tablet as a Whiteboard.



- Pen 1
- Pen 2
- Clear all
- Settings
- Computer mode allows you to use your Tablet as a wireless mouse.
- Tap Record to start and stop video recordings
- Capture the displayed contents as a picture
- Undo the last action
- Select objects to move/resize
- Insert pre-made Stamps
- Use the Next Menu button to scroll through all menu screens.

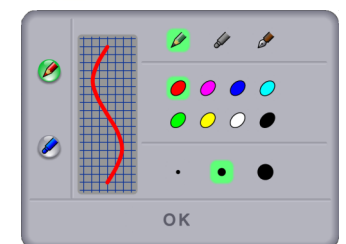


Teaching Material Mode

View pictures, videos and teaching material created with Image Mate Accent.



Use pictures, videos and imported images from your computer to create teaching material from your lesson. Add text, stamps and save!



Change to pencil/highlighter/pen mode, select color and thickness.